

Entering the Building, Lobby and Spectator Protocol	<ul style="list-style-type: none"> <li>Families may not arrive more than 10 minutes prior to class</li> <li>Staff will greet children outside or at the door and escort them to the appropriate waiting space for class</li> <li>Only 1 parent or guardian allowed per family, however, drop off and pick up is recommended</li> <li>Per CDC recommendations, we request spectators and guardians over the age of 65 or those with underlying conditions remain outside the building</li> <li>All individuals will wash or sanitize hands when entering the building</li> <li>Spectators who remain on site are encouraged to wear a mask. The high traffic areas of the gym, where social distancing presents a challenge are the lobby, hallways, stairwells, bathrooms and viewing areas and face coverings are strongly encouraged in these areas. Please refer to site map for more information</li> <li>We ask that bathroom use be limited by spectators where possible, to allow for more bathroom capacity for our athletes</li> <li>Viewing areas will be spaced no less than 6 feet apart, and spectators are required to adhere to 6-foot social distancing requirements</li> <li>Front desk area is marked to ensure social distancing</li> <li>Parents and guardians are encouraged to call, email or handle billing and registration issues online when possible</li> <li>Credit card use preferred over the handling of cash or checks</li> </ul>
Class procedures and Protocols	<ul style="list-style-type: none"> <li>Class ratios will be decreased to allow for appropriate distancing and lesson plan set-up</li> <li>Class times will be staggered to ensure traffic through the lobby will be less congested</li> <li>Stations during class will be spaced 6 feet apart</li> <li>Classes will line up and rotate adhering to social distancing protocols</li> <li>Hand sanitizer will be used between rotations, and at the beginning and end of class</li> <li>Stations will be wiped down between classes</li> <li>Water fountain will be off limits, athletes required to bring a water bottle</li> <li>Athletes showing symptoms of illness will be required to leave class and return for a make-up class when they are free of symptoms or cleared by a physician</li> <li>Spotting will be limited, but will be utilized where necessary for instruction and athlete safety per Responsible Restart Ohio Guidelines</li> <li>Loose foam pits will be covered with matting, which will be cleaned daily or more frequently if used at a higher capacity</li> </ul>
Facility Maintenance	<ul style="list-style-type: none"> <li>All equipment will be cleaned daily per CDC guidelines</li> <li>High use items, such as props, small mats, volleyballs, and weight equipment will be sanitized after each group, rotation or class</li> <li>Bathrooms, common areas, door handles, and general use areas will be cleaned multiple times throughout the day</li> </ul>
<b><u>Facility Specific Protocols</u></b>	

## INTEGRITY ATHLETICS - 8185 BUSINESS WAY

-Preschool, recreational, T&T team, rhythmic team students will enter through the main double doors, near the front desk (Enter & Exit A)

-Martial Arts, Ninja students and all staff will enter at the west end of the building through the single door (Enter & Exit B)

- Boys and Girls team members will enter at the west end of the building through the double doors (Entrance C and Exit through E)

\*Refer to facility map for more detail

## INTEGRITY VOLLEYBALL CENTER

-Athletes will enter through the main front door

-Athletes will exit through back door near weight room

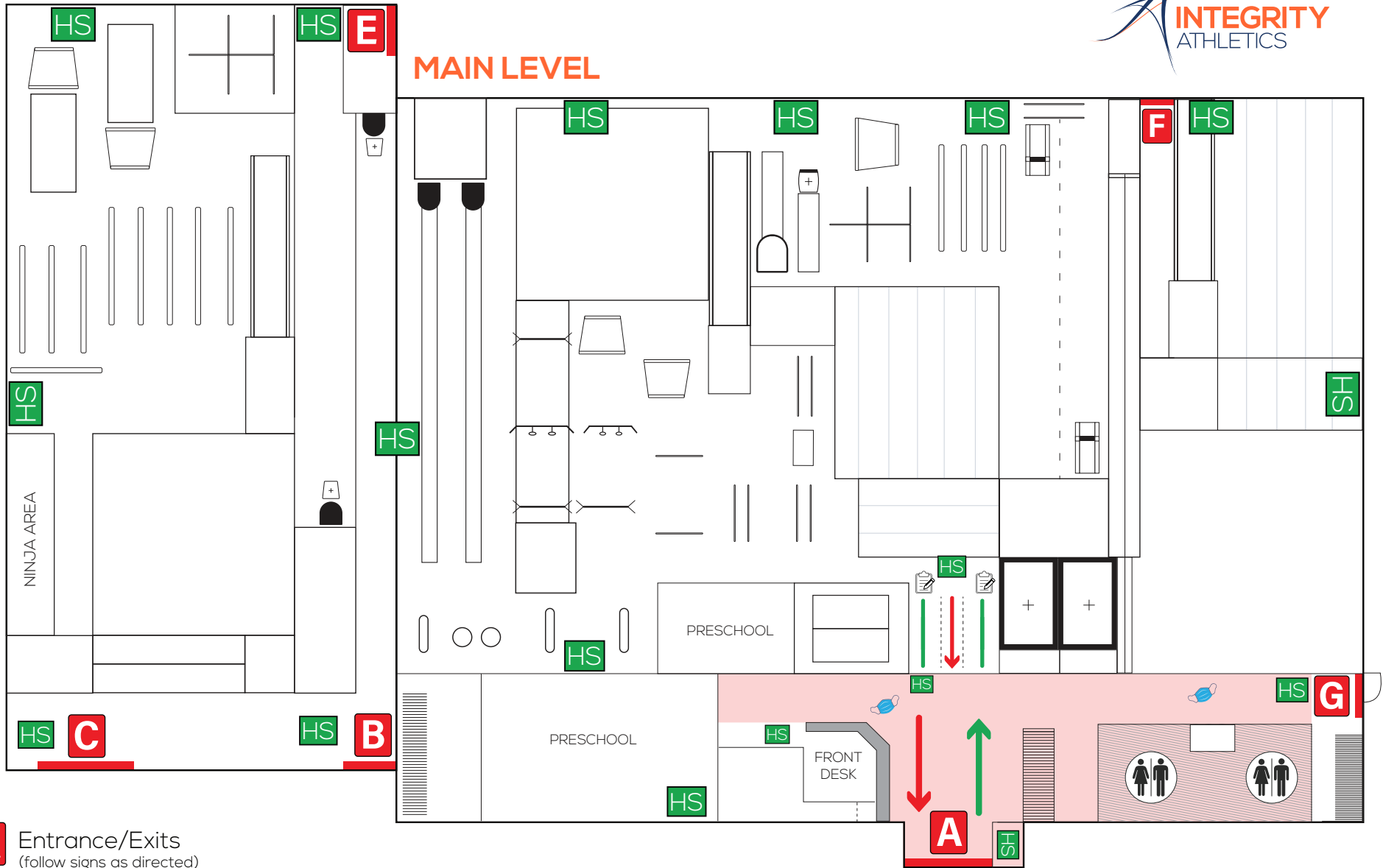
\*Refer to facility map for traffic pattern

## TRICS GYMNASTICS ACADEMY

-Athletes will be greeted outside or at the main entrance door and escorted to the appropriate waiting area for class

-All athletes and spectators will exit through the double doors next to the lockers, down the hallway and into the main parking area

## MAIN LEVEL



**A** Entrance/Exits  
(follow signs as directed)

 Restroom

**HS** Hand Sanitation Stations

 High Traffic Area  
(mask recommended for spectators)

## UPPER LEVEL

